

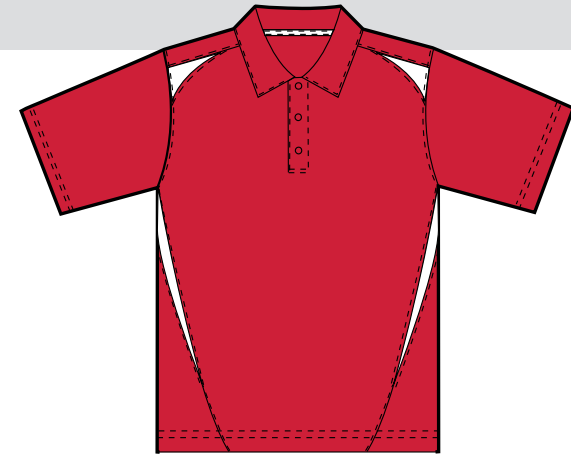
5012 Premier Sport Shirt



- ³ 100% polyester wicking closed hole mesh
- ³ 100% polyester pinhole micromesh inserts
- ³ Wicks moisture away from the body
- ³ Heat sealed label
- ³ Self-fabric collar
- ³ Breathable contrast color pinhole mesh neck tape, top placket facing (color bodies), shoulder, and front inserts
- ³ Topstitched armholes
- ³ Set-in sleeves
- ³ Box-stitched placket
- ³ Three matching buttons with cross-stitching
- ³ Double-needle hemmed sleeves and bottom
- ³ Individually polybagged

Sizes: Adult S-4XL

Colors: Black/white, dark green/white, graphite/white, maroon/white, navy/white, orange/white, purple/white, red/white, royal/white, white/black, white/dark green, white/graphite, white/maroon, white/navy, white/orange, white/purple, white/red, white/royal



5013 Ladies Premier Sport Shirt



- ³ 100% polyester wicking closed hole mesh
- ³ 100% polyester pinhole micromesh inserts
- ³ Wicks moisture away from the body
- ³ Ladies fit
- ³ Heat sealed label
- ³ Self-fabric collar
- ³ Breathable contrast color pinhole mesh neck tape, top placket facing (color bodies), shoulder, and front inserts
- ³ Topstitched armholes
- ³ Set-in sleeves
- ³ Box-stitched placket
- ³ Three matching buttons with cross-stitching
- ³ Double-needle hemmed sleeves and bottom
- ³ Individually polybagged

Sizes: Ladies S-2XL

Colors: Black/white, dark green/white, graphite/white, maroon/white, navy/white, orange/white, purple/white, red/white, royal/white, white/black, white/dark green, white/graphite, white/maroon, white/navy, white/orange, white/purple, white/red, white/royal

