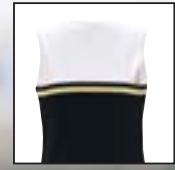


MIX & MATCH

PG. 150



T BACK

9135|9136

AVAILABLE JUNE 2012

LADIES FLYER SHELL

100% polyester double knit • 90% polyester/10% spandex knit • Ladies fit • V-neck with two color rib trim • Contrast color shoulder and back panels with two color rib trim • Two color modified racerback styling with two color trim • Poly/spandex knit back for 4-way stretch • Double-needle hemmed armholes and bottom • Longer body length and contoured waist for better fit.

9135 LADIES: S-2XL

9136 GIRLS: XXS-L



9136

9126

9125|9126

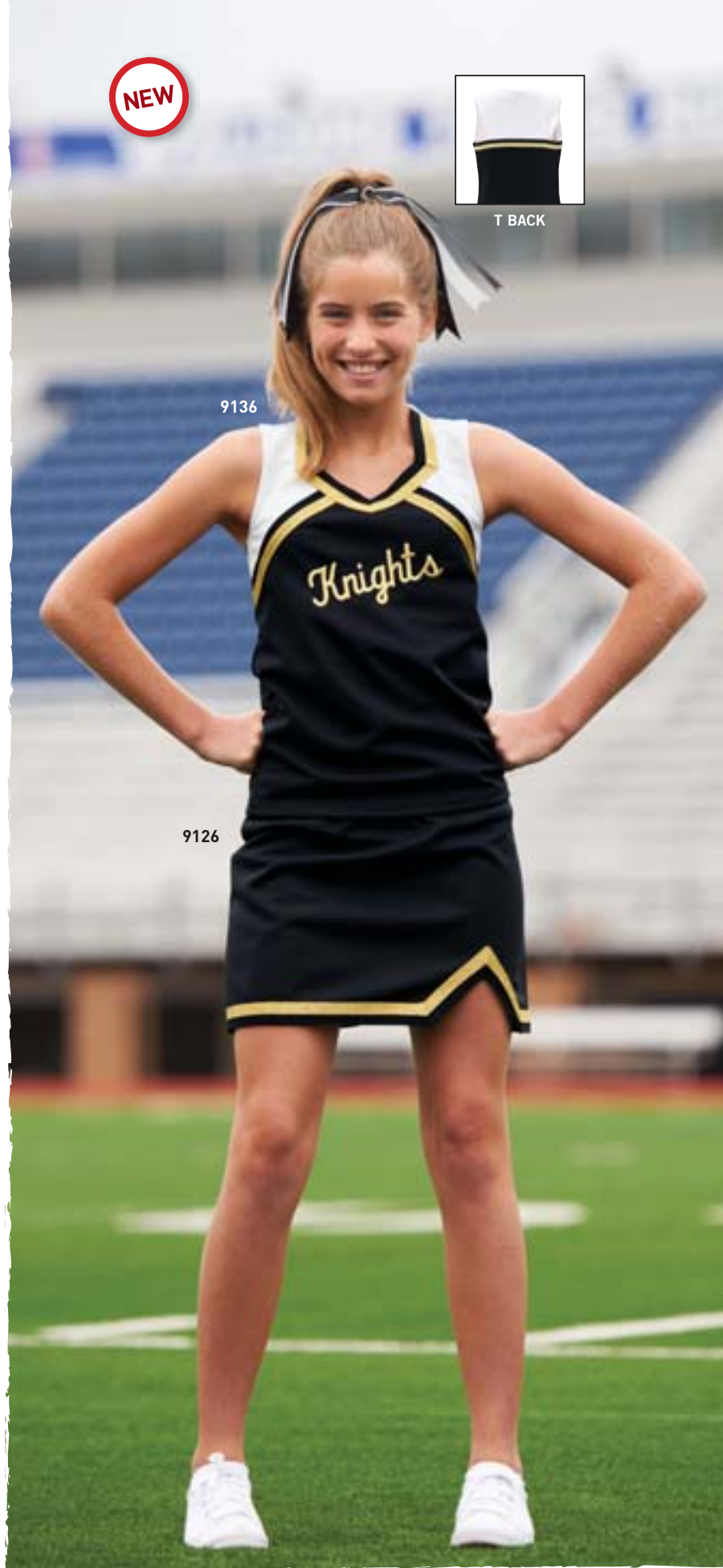
NEW COLORS
AVAILABLE JUNE 2012

LADIES ENERGY SKIRT

100% polyester double knit • Ladies' fit • Covered elastic waistband • Front left V-notch on bottom with two-color trim.

9125 LADIES: S-2XL

9126 GIRLS: XXS-L





9121

9126

DESIGN A CUSTOM FLYER



at augustasportswear.com



START
DESIGNING
TODAY AT

augustasportswear.com

9120|9121

LADIES EXPLOSION SHELL

100% polyester double knit • Ladies' fit • V-neck
• Contrast color triangular side panels with two-color rib trim.

9120 LADIES: S-2XL

9121 GIRLS: XXS-L



9125|9126

**NEW COLORS
AVAILABLE JUNE 2012**

LADIES ENERGY SKIRT

100% polyester double knit • Ladies' fit • Covered elastic waistband • Front left V-notch on bottom with two-color trim.

9125 LADIES: S-2XL

9126 GIRLS: XXS-L



9110|9111

LADIES PRIDE SHELL

100% polyester double knit • Ladies' fit • V-neck
• Contrast color upper front panel with two-color rib trim.

9110 LADIES: S-2XL

9111 GIRLS: XXS-L



9115|9116

LADIES LIBERTY SKIRT

100% polyester double knit • Ladies' fit • Covered elastic waistband • Contrast color pressed box pleats with yoke.

9115 LADIES: S-2XL

9116 GIRLS: XXS-L



9111

9116



9101

9131

BENEFITS

- + 100% Polyester Double Knit
- + Covered Elastic Waistband Skirts
- + Lots Of Team Colors
- + Girls XXS Through Ladies 2XL Sizes

9100|9101

LADIES EXCITE SHELL

100% polyester double knit • Ladies' fit • V-neck.

9100 LADIES: S-2XL

9101 GIRLS: XXS-L



9130|9131

LADIES FUSION SKIRT

100% polyester double knit • Ladies' fit • Covered elastic waistband • Three pressed pleats on front left side with yoke.

9130 LADIES: S-2XL

9131 GIRLS: XXS-L



MIX & MATCH AND FIT KIT

PG. 150 & 151



9101

9106

9105|9106

LADIES SHOUT SKIRT

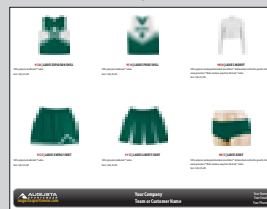
100% polyester double knit • Ladies' fit • Covered elastic waistband • Side vents.

9105 LADIES: S-2XL

9106 GIRLS: XXS-L



DESIGN A CUSTOM FLYER



at augustasportswear.com

START
DESIGNING
TODAY AT
augustasportswear.com



9010

BACK

9015

BODY WEAR

9010|9011



LADIES MIDRIFF

100% polyester wicking smooth knit
 • Ladies' fit • Heat sealed label • Self-fabric turtleneck collar • Set-in sleeves • Zipper on upper back • Double-needle hemmed sleeves and 2" covered elastic bottom • Individually packaged for resale.

9010 LADIES: S-2XL

9011 GIRLS: XS-L



9015|9016



LADIES BRIEF

100% polyester wicking smooth knit
 • Ladies' fit • Heat sealed label • Low rise • Double-needle hemmed covered elastic waistband and leg opening • Individually packaged for resale.

9015 LADIES: S-2XL

9016 GIRLS: XS-L



1210|1211



LADIES POLY/SPANDEX 2.5" SHORT

90% polyester/10% spandex knit • Odor resistant
 • Wicks moisture • Ladies' fit • Heat sealed label
 • Low rise • Covered elastic waistband
 • No side seams • 2½-inch inseam.

1210 LADIES: S-2XL

1211 GIRLS: XS-L **NEW GIRLS SIZES**



MIX & MATCH

MATCH ANY TOP WITH ANY SKIRT

NEW



9135|9136 - PG 144



9120|9121 - PG 145



9100|9101 - PG 147



9110|9111 - PG 146



9125|9126 - PG 144, 145



9115|9116 - PG 146



9105|9106 - PG 148



9130|9131 - PG 147

CHEER UNIFORM FIT KIT

9888

CHEER UNIFORM FIT KIT

TEAM FIT KIT CONTENTS:

Large black duffel bag with "Augusta Sportswear® Team Fit Kit" logo for ease of transporting • One of each size of style 9100 Ladies Excite Shell • One of each size of style 9101 Girls Excite Shell • One of each size of style 9105 Ladies Shout Skirt • One of each size of style 9106 Girls Shout Skirt • Each size is a separate color for easier size recognition • Laminated size/color reference chart.

9888: One size



9888



AUGUSTASPORTSWEAR.COM

CHEER / SPIRITWEAR

DETACHABLE HOOD



BACK VENT



NEW

3161

RAIN JACKET

3160|3161

CLEAR RAIN JACKET

100% PVC • Unisex fit • Front zipper with outside storm flap and snaps • Detachable hood with drawcord (drawcord on Adult sizes only) • Raglan sleeves with adjustable snap closures • Vented back with mesh air vents for breathability • Front pockets with flaps and snap closure • Open bottom.

3160 ADULT: S-2XL

3161 YOUTH: S-L



1280|1281

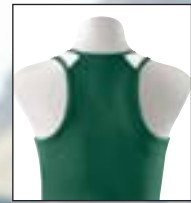
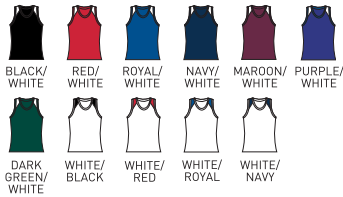


LADIES INFINITY JERSEY

90% polyester/10% spandex knit • 93% polyester/7% spandex mesh inserts • Odor resistant • Wicks moisture • Ladies' fit • Heat sealed label • Self-fabric binding at neck and armholes • White poly/spandex mesh shoulder inserts for breathability • Racerback styling.

1280 LADIES: S-2XL

1281 GIRLS: S-L



RACERBACK



MESH



1280

1285

1285|1286



LADIES FINALIST SKORT

90% polyester/10% spandex knit • Odor resistant • Wicks moisture • Ladies' fit • Heat sealed label • Low rise • Covered elastic waistband • Contrasting color trim at side seam and bottom • Matching inner short • V-notch at sides.

1285 LADIES: S-2XL

1286 GIRLS: S-L



RACERBACK

707|708



LADIES POLY/SPANDEX RACERBACK TANK

90% polyester/10% spandex knit • 100% polyester wicking knit shelf bra • Odor resistant • Wicks moisture • Ladies' fit • Heat sealed label • Contrast color self-fabric binding at neck and armholes • Contrast two-color side panels • Racerback styling.

707 LADIES: S-2XL

708 GIRLS: S-L





WIDE RACERBACK

1202|1203



LADIES POLY/SPANDEX SOLID RACERBACK TANK

90% polyester/10% spandex knit • Odor resistant • Wicks moisture • Ladies' fit • Heat sealed label • Self-fabric binding at neck and armholes • Wide racerback styling for easier decoration.

1202 LADIES: S-2XL

1203 GIRLS: S-L



MESH INSERT NECK AND SIDES

1220|1221



LADIES CHALLENGE JERSEY

90% polyester/10% spandex knit • 93% polyester/7% spandex neck and mesh inserts • Odor resistant • Wicks moisture • Ladies' fit • Heat sealed label • White poly/spandex mesh V-neck collar • White poly/spandex mesh side inserts for breathability.

1220 LADIES: S-2XL

1221 GIRLS: S-L



BREATHABLE MESH INSERT



1200|1201



LADIES POLY/SPANDEX ACE JERSEY

90% polyester/10% spandex knit • 93% polyester/7% spandex mesh inserts • Odor resistant • Wicks moisture • Ladies' fit • Heat sealed label • Mandarin collar with V-notch • White poly/spandex mesh front and back inserts for breathability.

1200 LADIES: S-2XL

1201 GIRLS: S-L





705|706



LADIES POLY/SPANDEX SLEEVELESS TOP

90% polyester/10% spandex knit • Odor resistant • Wicks moisture
 • Ladies' fit • Heat sealed label • Self-fabric binding at neck and armholes • Contrast color side panels.

705 LADIES: S-2XL

706 GIRLS: S-L



RACERBACK

701|702



LADIES POLY/SPANDEX SPORT BRA

90% polyester/10% spandex knit • Odor resistant • Wicks moisture
 • Ladies' fit • Heat sealed label • Contrast self-fabric binding at neck and armholes • Flatlock seamed construction for extra comfort • Double layer front panel for additional support • Contrast color back and shoulder • Keyhole racerback styling.

701 LADIES: S-2XL

702 GIRLS: S-L





1230|1231



LADIES MATCH JERSEY

100% polyester wicking closed hole mesh • Ladies' fit • Heat sealed label • Self-fabric V-neck and collar • Contrast color shoulder inserts • Self-fabric armholes.

1230 LADIES: S-2XL

1231 GIRLS: S-L



AUGUSTASPORTSWEAR.COM

CHEER / SPIRITWEAR



DESIGN A CUSTOM FLYER

at augustasportswear.com

START DESIGNING TODAY AT augustasportswear.com

5059



LADIES SLEEVELESS WICKING TEXTURED GAMEDAY SPORT SHIRT

100% polyester wicking closed hole mesh • 94% polyester/6% spandex wicking inserts • Ladies' fit • Heat sealed label • Self-fabric V-neck collar • Contrast color shoulder and side inserts • Smooth inserts stretch for enhanced performance • Self-fabric armholes • Side vents.

5059 LADIES: XS-2XL



PULSE TEAM SHORT

BENEFITS

- + Lining Wicks Moisture
- + Low Rise
- + Built-in Brief
- + Inside Key Pocket

1265|1266



LADIES JUNIOR FIT PULSE TEAM SHORT

Shell is 100% polyester micropoly • Inserts are 100% polyester mesh • Lining is 100% polyester wicking crepe • Liner wicks moisture • Junior fit • Low rise • Covered elastic waistband with inside drawcord • Inner brief with leg elastic • Inside key pocket • Mesh insert side panel • 4-inch inseam • Contrast self-fabric binding on side panels and hem • Girls inseam graded.

1265 LADIES JUNIOR FIT: S-2XL

1266 GIRLS: S-L

For Junior Fit size guide see page 258.

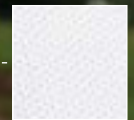


POWER YELLOW/WHITE/BLACK NEW
 BLACK/WHITE/POWER YELLOW NEW
 PURPLE/WHITE/POWER YELLOW NEW
 RED/WHITE/BLACK
 ROYAL/WHITE/BLACK
 ORANGE/WHITE/BLACK
 NAVY/WHITE/BLACK

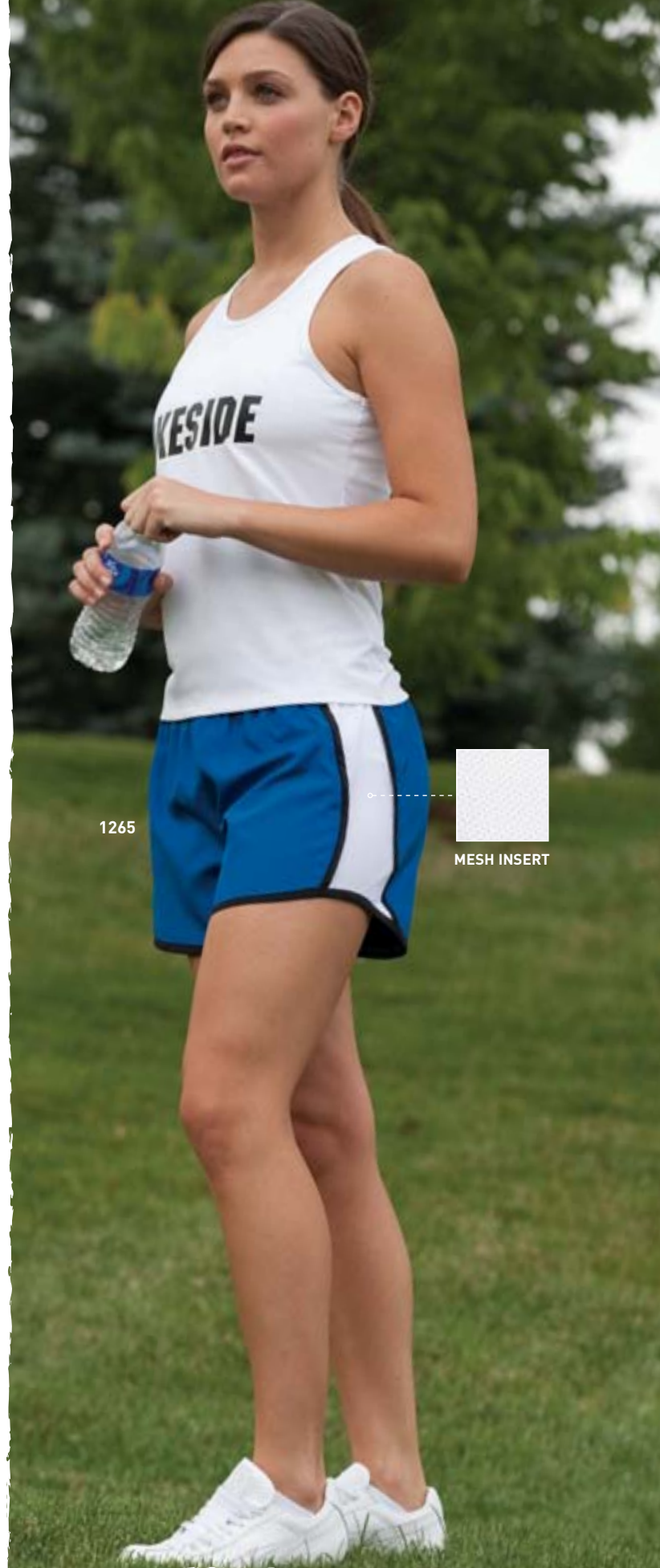


MAROON/WHITE/BLACK
 PURPLE/WHITE/BLACK
 DARK GREEN/WHITE/BLACK
 POWER PINK/WHITE/BLACK
 BLACK/BLACK/WHITE

1265



MESH INSERT





V-NOTCH



1285|1286



LADIES FINALIST SKORT

- 90% polyester/10% spandex knit • Odor resistant • Wicks moisture
- Ladies' fit • Heat sealed label • Low rise • Covered elastic waistband
- Contrast color trim at side seam and bottom
- Matching inner short • V-notch at sides.

1285 LADIES: S-2XL

1286 GIRLS: S-L



751|752



LADIES POLY/SPANDEX TEAM SKORT

- 90% polyester/10% spandex knit • Odor resistant • Wicks moisture
- Ladies' fit • Heat sealed label • Low rise • Covered elastic waistband
- Matching inner short • V-notch at sides.

751 LADIES: S-2XL

752 GIRLS: S-L



742|743

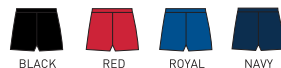


LADIES POLY/SPANDEX 4" SHORT

- 90% polyester/10% spandex knit • Odor resistant • Wicks moisture
- Ladies' fit • Heat sealed label • Flatlock seamed construction for extra comfort • Low rise • Covered elastic waistband • No side seams
- Two-ply gusset • 4-inch inseam • Girls inseam graded.

742 LADIES: S-2XL

743 GIRLS: S-L



1210|1211



LADIES POLY/SPANDEX 2.5" SHORT

- 90% polyester/10% spandex knit • Odor resistant • Wicks moisture
- Ladies' fit • Heat sealed label • Low rise • Covered elastic waistband
- No side seams • 2½-inch inseam.

1210 LADIES: S-2XL

1211 GIRLS: XS-L NEW GIRLS SIZES





955|956



LADIES JUNIOR FIT WICKING MESH CHEER SHORT

100% polyester wicking mesh • Junior fit • Elastic waistband • V-notch leg
• 3-inch inseam • Girls inseam graded.

955 LADIES JUNIOR FIT: S-2XL

956 GIRLS: S-L

For Junior Fit size guide see page 258.



987|988

LADIES JUNIOR FIT JERSEY SHORT

Heavyweight 50% polyester/50% cotton jersey knit • Junior fit • Elastic waistband
• V-notch leg • 3-inch inseam • Girls inseam graded.

987 LADIES JUNIOR FIT: XS-2XL

988 GIRLS: XS-L

For Junior Fit size guide see page 258.

***Available in 2XL.**



983|984

LADIES JUNIOR FIT JERSEY SKORT

Heavyweight 50% polyester/50% cotton jersey knit • Junior fit • Elastic waistband
• Combination skirt and short with front flap • 3-inch inseam • Girls inseam graded.

983 LADIES JUNIOR FIT: S-2XL

984 GIRLS: XS-L

For Junior Fit size guide see page 258.

